

Income polarization in European countries and Europe wide, 2004–2012

Supporting information

Appendix A: European Union Statistics on Income and Living Conditions (EU-SILC)

Table A1: Descriptives composition disposable household income EU-SILC, 2012

Figure A1: Decomposition mean equivalized disposable income, 2012

Figure A2: Kernel densities of income in 20 countries

Appendix B: Sensitivity analysis polarization measure *DER* for a range of values for α

Appendix A. European Union Statistics on Income and Living Conditions (EU-SILC)

Table A1. Descriptives composition disposable household income EU-SILC, 2012

<i>Old EU-15</i>				
Disposable equivalized income	Mean	Std. Dev.	Min	Max
Austria–AT (# Obs: 13,904)	23,266	13,892	0	483,745
Belgium–BE (# Obs: 13,905)	20,445	11,184	25	280,207
Germany–DE (# Obs: 27,895)	21,423	13,154	135	443,428
Denmark–DK (# Obs: 13,300)	31,073	16,189	1,092	341,276
Spain–ES (# Obs: 33,059)	13,311	8,595	0	127,785
Finland–FI (# Obs: 25,350)	25,620	21,193	9	1,573,952
France–FR (# Obs: 28,251)	24,349	26,830	311	2,099,837
Greece–GR (# Obs: 13,656)	8,854	6,031	10	96,917
Ireland–IE (# Obs: 11,861)	21,315	16,165	12	413,586
Italy–IT (# Obs: 47,083)	18,592	15,901	3	976,742
Luxembourg–LU (# Obs: 16,110)	34,774	20,624	33	450,338
Netherlands–NL (# Obs: 24,909)	24,126	12,600	167	432,133
Portugal–PT (# Obs: 15,956)	9,383	7,223	149	180,783
Sweden–SE (# Obs: 16,547)	26,477	13,091	44	433,713
United Kingdom–UK (# Obs: 23,281)	19,185	14,989	41	485,838
<i>NMS-13</i>				
Bulgaria–BG (# Obs: 14,580)	2,468	1,837	61	35,866
Cyprus–CY (# Obs: 13,376)	19,775	17,583	251	429,119
Czech Republic–CZ (# Obs: 20,228)	7,841	4,033	17	104,518
Estonia–EE (# Obs: 14,229)	5,458	3,311	51	46,093
Croatia–HR (# Obs: 15,127)	5,403	3,256	106	43,470
Hungary–HU (# Obs: 28,420)	4,052	2,302	251	44,093
Lithuania–LT (# Obs: 12,631)	4,280	2,685	16	32,160
Latvia–LV (# Obs: 15,137)	3,951	2,940	17	49,324
Malta–MT (# Obs: 11,922)	12,019	7,586	0	158,774
Poland–PL (# Obs: 37,110)	5,175	3,309	11	89,264
Romania–RO (# Obs: 17,643)	1,814	1,135	7	22,004
Slovenia–SI (# Obs: 28,064)	13,066	5,966	588	83,637
Slovakia–SK (# Obs: 15,457)	7,382	3,508	5	42,212
<i>Other</i>				
Switzerland–CH (# Obs: 17,449)	47,514	29,067	319	493,796
Iceland–IS (# Obs: 8,966)	15,516	8,055	1	153,561
Norway–NO (# Obs: 15,515)	42,691	19,331	0	361,721

Source: Own calculations EU-SILC.

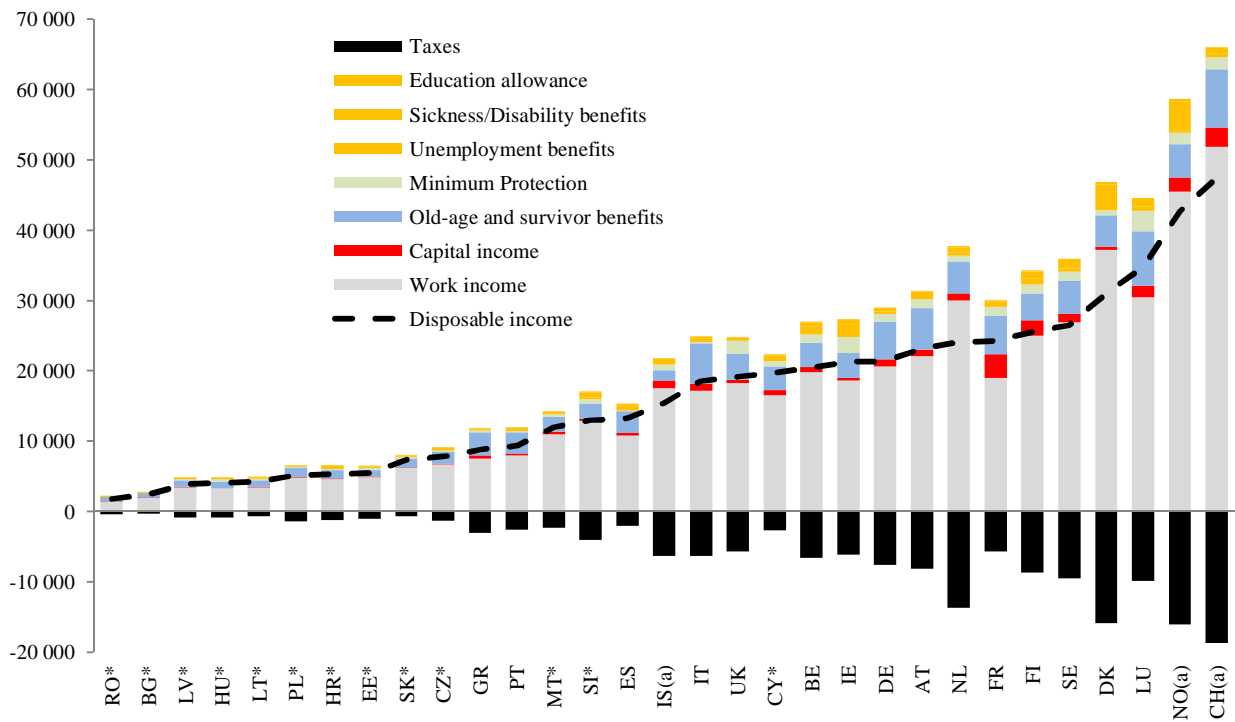
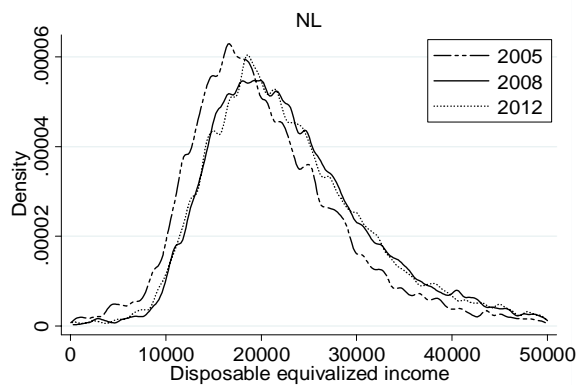
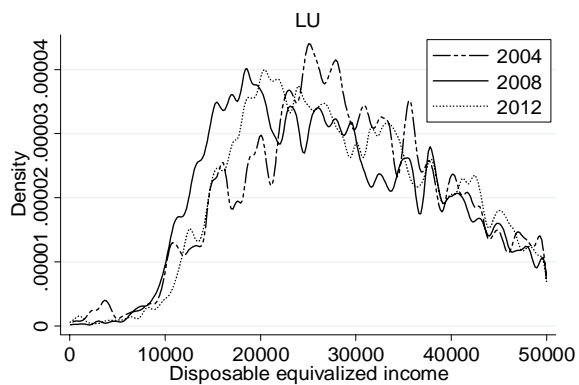
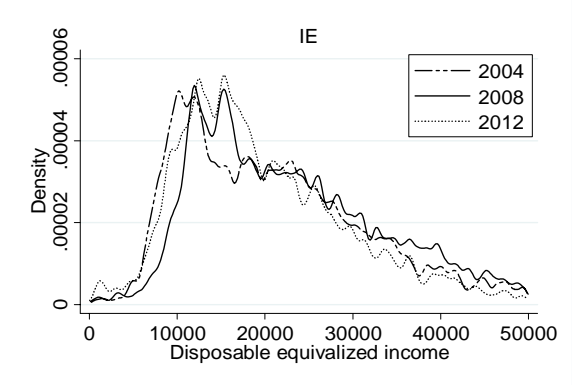
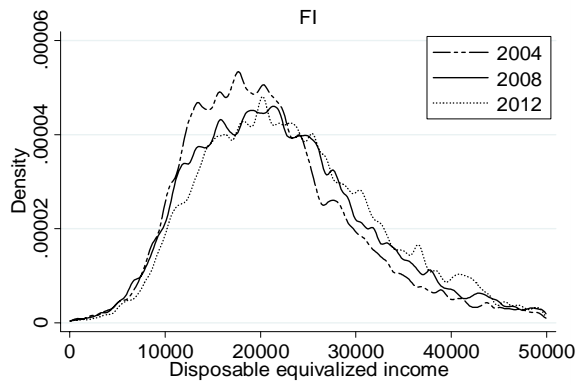
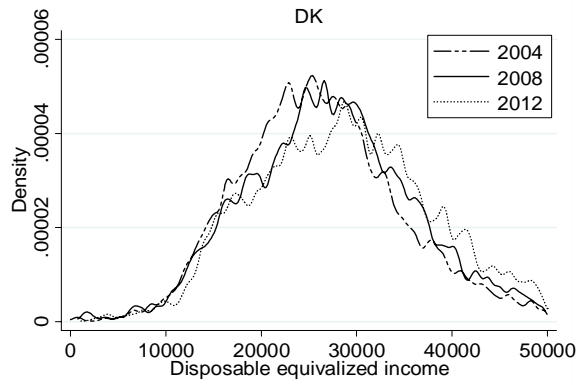
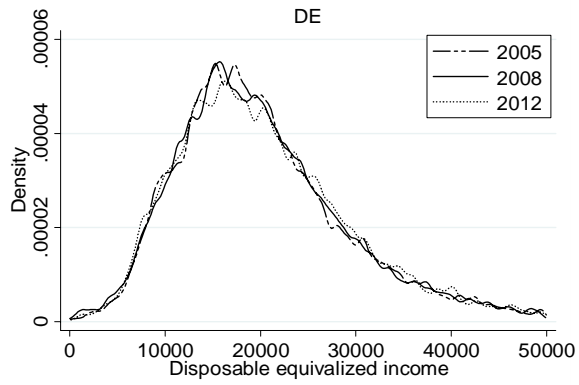
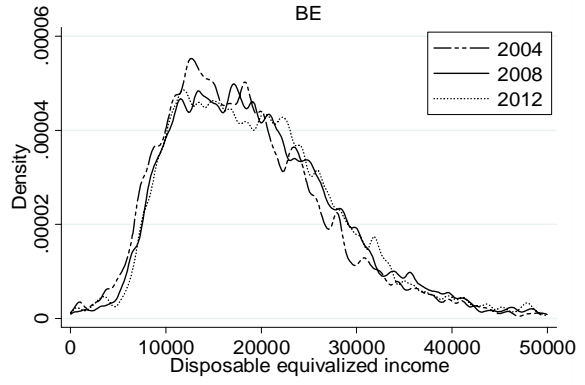
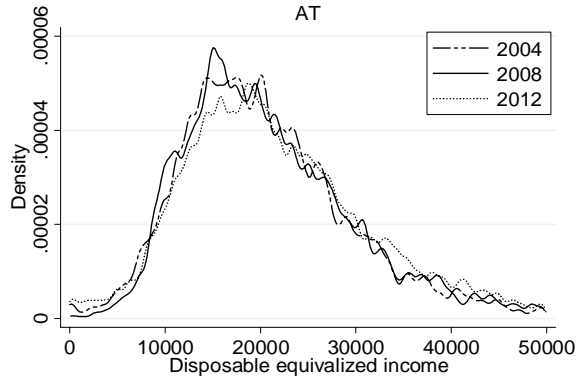
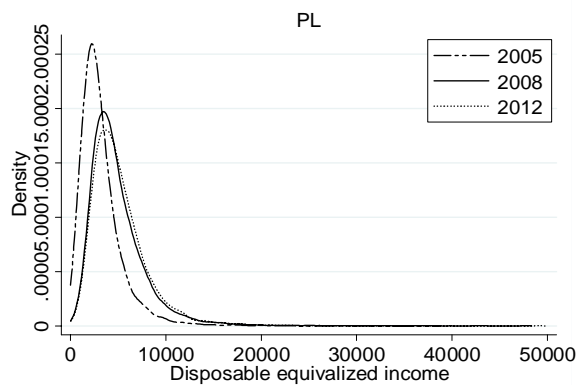
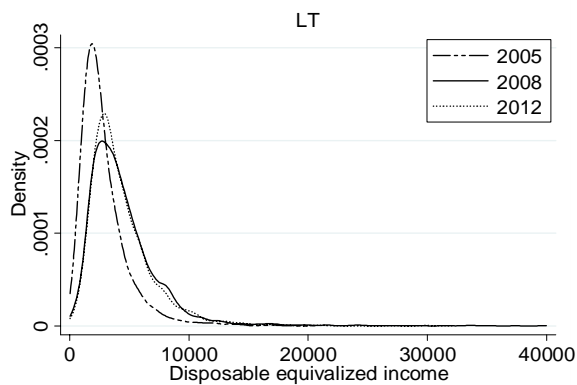
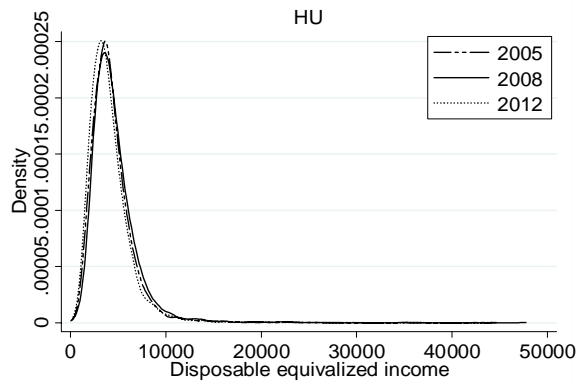
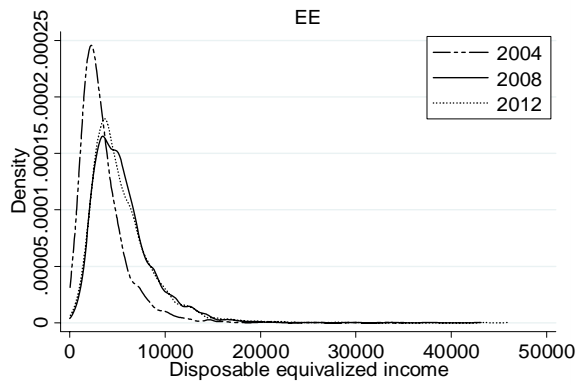
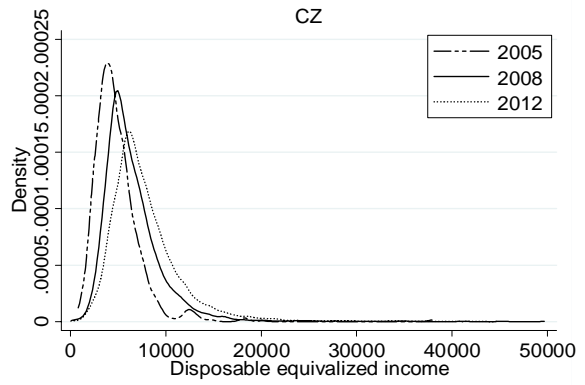
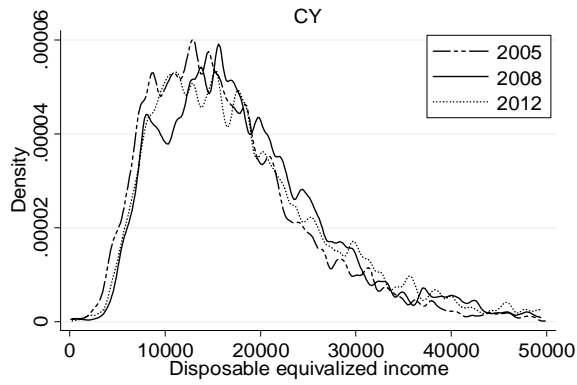
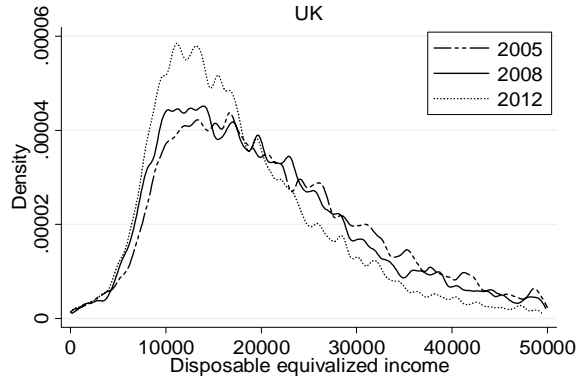
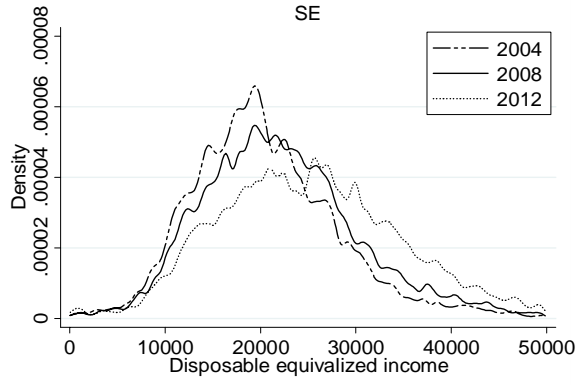


Fig. A1. *Decomposition mean equivalized disposable income, 2012*

Note: * = NMS (a)= Non-EU countries.

Source: Own calculations EU-SILC; all incomes are expressed in euros of 2005.





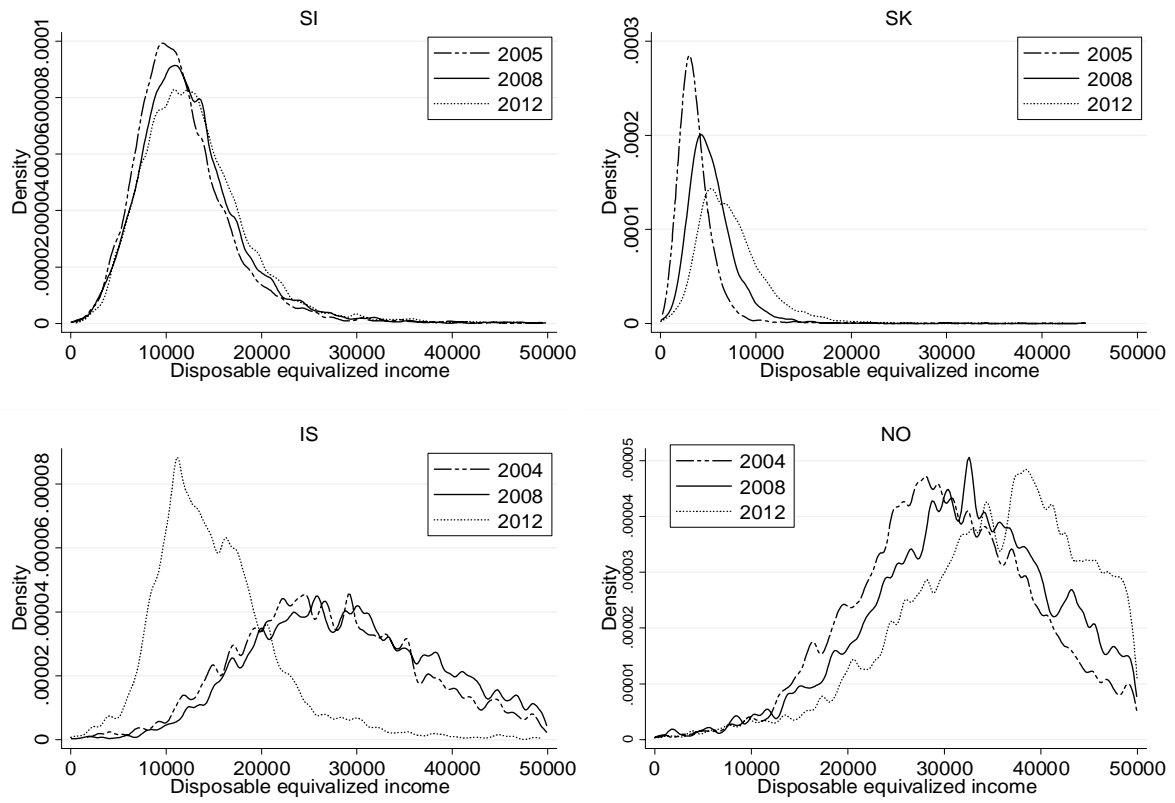


Fig. A2. Kernel densities of income in 20 countries

Source: Own calculations EU-SILC.

Appendix B. Sensitivity analysis polarization measure *DER* for a range of values for α

We computed polarization measure *DER* for a range of values of α across countries for 2012. Low values for α produce values of *DER* close to values of Gini, while $\alpha = 1$ leads to high disparity between Gini and the *DER* indices.

Country	DER ($\alpha=0$)	DER ($\alpha=0.5$)	DER ($\alpha = 1$)	Gini coefficient	Poverty (PL60)	Social exclusion	Mean DPI
NO(a)	0.218	0.165	0.150	0.225	0.100	0.137	42.691
DK	0.227	0.170	0.154	0.281	0.131	0.190	31.073
SI*	0.236	0.173	0.147	0.237	0.135	0.196	13.066
SE	0.240	0.174	0.148	0.248	0.141	0.156	26.477
NL	0.235	0.175	0.159	0.254	0.101	0.150	24.126
IS(a)	0.237	0.175	0.155	0.240	0.079	0.127	15.516
CZ*	0.243	0.177	0.158	0.249	0.096	0.154	7.841
SK*	0.252	0.180	0.150	0.253	0.132	0.205	7.382
HU*	0.268	0.187	0.156	0.269	0.140	0.324	4.052
BE	0.267	0.188	0.154	0.265	0.153	0.216	20.445
DE	0.275	0.189	0.155	0.283	0.161	0.196	21.423
FI	0.274	0.189	0.161	0.259	0.132	0.172	25.620
AT	0.284	0.191	0.155	0.276	0.144	0.185	23.266
LU	0.277	0.194	0.162	0.280	0.151	0.184	34.774
CH(a)	0.289	0.195	0.157	0.288	0.159	0.175	47.514
MT*	0.284	0.197	0.162	0.271	0.151	0.231	12.019
\PL*	0.301	0.199	0.157	0.309	0.171	0.267	5.175
FR	0.307	0.204	0.174	0.305	0.141	0.191	24.349
EE*	0.310	0.204	0.159	0.325	0.175	0.234	5.458
IE	0.308	0.204	0.167	0.299	0.157	0.300	21.315
GR	0.318	0.204	0.156	0.343	0.231	0.346	8.854
HR*	0.315	0.205	0.152	0.309	0.204	0.326	5.403
LT*	0.313	0.206	0.162	0.320	0.186	0.325	4.280
IT	0.325	0.207	0.161	0.319	0.194	0.299	18.592
RO*	0.324	0.207	0.153	0.332	0.226	0.417	1.814
UK	0.317	0.208	0.171	0.313	0.160	0.241	19.185
ES	0.331	0.209	0.156	0.350	0.208	0.272	13.311
BG*	0.338	0.213	0.161	0.336	0.212	0.493	2.468
CY*	0.326	0.214	0.175	0.310	0.147	0.271	19.775
PT	0.342	0.216	0.170	0.345	0.179	0.253	9.383
LV*	0.313	0.221	0.169	0.357	0.192	0.362	3.951
<i>Mean-31</i>	<i>0.287</i>	<i>0.195</i>	<i>0.159</i>	<i>0.292</i>	<i>0.158</i>	<i>0.245</i>	

Note: * = CEE NMS; (a) = Non-EU countries.